



# Mapefloor Decor 700

**Solvent-free,  
two-component epoxy  
paste in water dispersion  
to create floors with a  
trowel-effect or mottled  
finish**



## WHERE TO USE

**Mapefloor Decor 700** has been specially formulated to create a protective, decorative flooring with a trowel-effect or mottled finish.

**Mapefloor Decor 700** is used for decorative floors subject to medium traffic loads in environments requiring a personalised finish in a very short space of time, such as shops, showrooms, apartments, shopping centres and offices.

This product is both versatile and easy to apply allowing floors with a highly attractive and irregular surface finish to be created quickly and simply.

## Application examples

- Decorative floors in showrooms, shops and offices.
- Decorative floors subject to medium traffic loads, such as in warehouses, commercial outlets, exhibition areas and shopping centres.

## TECHNICAL CHARACTERISTICS

**Mapefloor Decor 700** is a solvent-free, two-component epoxy paste in water dispersion produced according to a formula developed in the MAPEI R&D laboratories.

**Mapefloor Decor 700** is applied using a trowel in layers from 1.5 to 3 mm thick. Once hardened, surfaces treated with this product have excellent resistance to abrasion and high resistance to chemicals.

Thanks to the creamy consistency of the product, highly decorative surfaces may be created such as a trowel-effect or mottled finish. A multitude of different tones may also be obtained by adding **Mapecolor Paste** colorant for **Mapefloor** systems to the product while preparing the mix.

Floors made using **Mapefloor Decor 700** must always be protected with a polyurethane finishing coat. We recommend the use of **Mapefloor Finish 50** or **Mapefloor Finish 52 W** polyurethane finishes.

## RECOMMENDATIONS

Do not apply **Mapefloor Decor 700**:

- on dusty, crumbly or loose surfaces;
- on surfaces impregnated with oil or grease.

## APPLICATION PROCEDURE

### Preparation of the substrate

It is very important that the surface is prepared correctly to guarantee correct installation and the best performance of **Mapefloor Decor 700**.

The most suitable method to prepare the surface is by shot-blasting or grinding with diamond disks.

All dust must then be removed with a vacuum cleaner. Do not use chemical preparation methods, such as acid rinsing, or aggressive percussion tools, otherwise the substrate may be damaged.

Any defects present, such as holes, pitting, cracking, etc. must be repaired beforehand using either

**Eporip**, **Primer SN** or **Mapefloor I 300 SL**, according to the width and depth of the defects and cracks.

If the substrate needs to be consolidated, use **Primer MF** or **Primer EP** (choose the most suitable product according to the porosity, which will also have an effect on the consumption rate).

If deep hollows or highly deteriorated areas are present on the substrate, repair these areas beforehand using **Mapefloor EP19** three-component epoxy mortar or with



# Mapecolor Decor 700



Mapecolor Paste poured on the substrate immediately after mixing



Application of Mapecolor Paste using a smooth trowel



The fresh surface of Mapecolor Paste after application with a trowel

products from the **Mapecolor** range. Highly deteriorated joints must be repaired using the same products. If any of the above guidelines are not strictly adhered to, the quality of the final surface may be poor.

## Priming the substrate (Primer SN)

Pour component B (4 kg) into component A (16 kg), add the **Mapecolor Paste** and mix with a low-speed drill with a spiral mixing attachment to form a smooth, homogenous paste. While mixing, add 4 kg of **Quartz 0.5** to the blend prepared as described above, and continue mixing for a few minutes to form a smooth, homogenous paste. Pour the mix as prepared according to the indications above onto the floor to be covered, and spread it out evenly and uniformly using a smooth trowel or a smooth rake. While the product is still fresh, sprinkle on a layer of **Quartz 0.5**. Once the **Primer SN** has hardened, remove excess sand with an industrial vacuum cleaner.

## Preparation and application of Mapecolor Paste

Apply two layers of **Mapecolor Paste** at a thickness of from 1.5 to 3 mm. Prepare the product by pouring component A (2 kg) into component B (8 kg), add the **Mapecolor Paste** (0.7 kg for each package of **Mapecolor Paste**) and mix with a low-speed drill with a spiral mixing attachment to form a smooth, homogenous paste. Slowly add from 2 to 20% by weight of water to the blend while mixing until the consistency required is obtained. When a creamy, workable mix has been formed, apply it on the floor with a trowel to obtain the decorative finish required. Once the first layer has hardened, and within a maximum of 24 hours after application, carefully sand the surface with a fine-grained sanding disk (N° 100 or N° 120) or a special sanding pad. Follow the same instructions to prepare and apply the second layer, but this time using a colour of **Mapecolor Paste** which contrasts with the colour used for the first layer.

## Finishing

The hardened surface of **Mapecolor Paste** must be protected with a suitable finishing coat, such as **Mapecolor Finish 50** two-component, aliphatic, hygro-hardening, transparent polyurethane or **Mapecolor Finish 52 W** two-component, polyurethane in water dispersion with low yellowing characteristics.

If a slightly non-slip finish is required, add 5-10% by weight of **Mapecolor Filler** to the **Mapecolor Finish 50** according to the degree of non-slip finish required. As an alternative to the finishing product indicated above, a coat of **Mapecolor I 300 SL TRP** up to 1.5 mm thick may be applied, which gives the surface a shiny, lens-like finish.

In order to make routine cleaning and

maintenance operations simpler, we recommend applying a coat of **Mapelux Opaca** or **Mapelux Lucida** metallic wax over the entire surface of the floor.

## Cleaning

Tools used to prepare and apply **Mapecolor Paste** must be cleaned under running water immediately after use. Once hardened, the product may only be removed using mechanical means.

## CONSUMPTION

From 1 to 1.5 kg/m<sup>2</sup> according to the characteristics of the substrate and type of decorative finish required.

## PACKAGING

component A = 2 kg;  
component B = 8 kg.

## STORAGE

**Mapecolor Paste** may be stored for 24 months in its original packaging in a dry place and at a temperature of at least +10°C.

## SAFETY INSTRUCTIONS FOR PREPARATION AND APPLICATION

**Mapecolor Paste** may irritate eyes and skin.

If component A comes into contact with the skin it may cause a rash in those subjects sensitive to such products.

We recommend using protective gloves and goggles when handling and using the product. If the product comes into contact, wash off with water and seek medical attention.

**Mapecolor Paste** component A is harmful for aquatic life. Do not dispose of the product in the environment.

For further and complete information about a safety use of our product please refer to our latest version of the Material Safety Data Sheet.

FOR PROFESSIONAL USERS.

## WARNING

*Although the technical details and recommendations contained in this product data sheet correspond to the best of our knowledge and experience, all the above information must, in every case, be taken as merely indicative and subject to confirmation after long-term practical application: for this reason, anyone who intends to use the product must ensure beforehand that it is suitable for the envisaged application: in every case, the user alone is fully responsible for any consequences deriving from the use of the product.*

Please refer to the current version of the Technical Data Sheet, available from our web site [www.mapei.com](http://www.mapei.com)

**All relevant references for the product are available upon request and from [www.mapei.com](http://www.mapei.com)**

## TECHNICAL DATA (typical values)

### PRODUCT IDENTITY

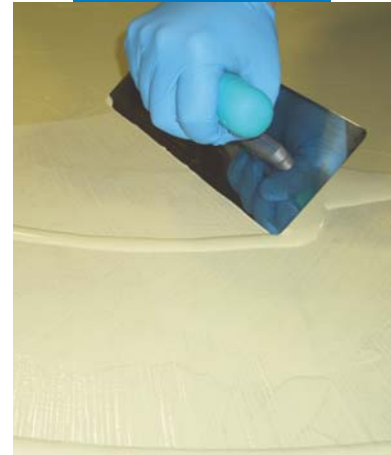
	component A	component B
<b>Colour:</b>	cream	white
<b>Appearance:</b>	paste	paste
<b>Density (g/cm<sup>3</sup>):</b>	1.2	1.65
<b>Viscosity at +23°C (mPa·s):</b>	350	650
<b>Hazard classification according to 1999/45/CE:</b>	irritant, hazardous for the environment Before using refer to the "Safety Instructions for the preparation and application" paragraph and the information on the packing and safety data sheet	irritant
<b>Storage:</b>	24 months in its original sealed packaging	
<b>Customs class:</b>	3907 30 00	

### APPLICATION DATA (at +23°C - 50% R.H.)

<b>Mixing ratio:</b>	component A: component B = 1 : 4
<b>Colour of mix:</b>	cream
<b>Consistency of mix:</b>	paste
<b>Density of the mix (kg/m<sup>3</sup>):</b>	1,450
<b>Viscosity of mix (mPa·s):</b>	700÷1,000
<b>Surface temperature of substrate:</b>	from +12°C to +30°C

### FINAL PERFORMANCE

<b>Bond strength (DIN ISO 4624) (N/mm<sup>2</sup>):</b>	> 1.5
<b>Dust dry at +23°C and 50% R.H.:</b>	2 hours
<b>Step-on time at +23°C and 50% R.H.:</b>	12 hours
<b>Final hardening time:</b>	7 days
<b>Resistance to temperatures (open air) (°C):</b>	-20/+60
<b>Compressive strength after 7 days (DIN EN 196) (N/mm<sup>2</sup>):</b>	70
<b>Flexural strength after 7 days (DIN 1048) (N/mm<sup>2</sup>):</b>	30
<b>Modulus of elasticity (DIN 1048) (N/mm<sup>2</sup>):</b>	15,000
<b>Taber abrasion resistance after 7 days (CS 17 disk - 1000 g - 1000 revs) (mg):</b>	50
<b>Coefficient of thermal expansion (DIN 50014) (°K):</b>	86x10 <sup>-6</sup>



*Application of the second coat of Mapefloor Decor 700 using a trowel*

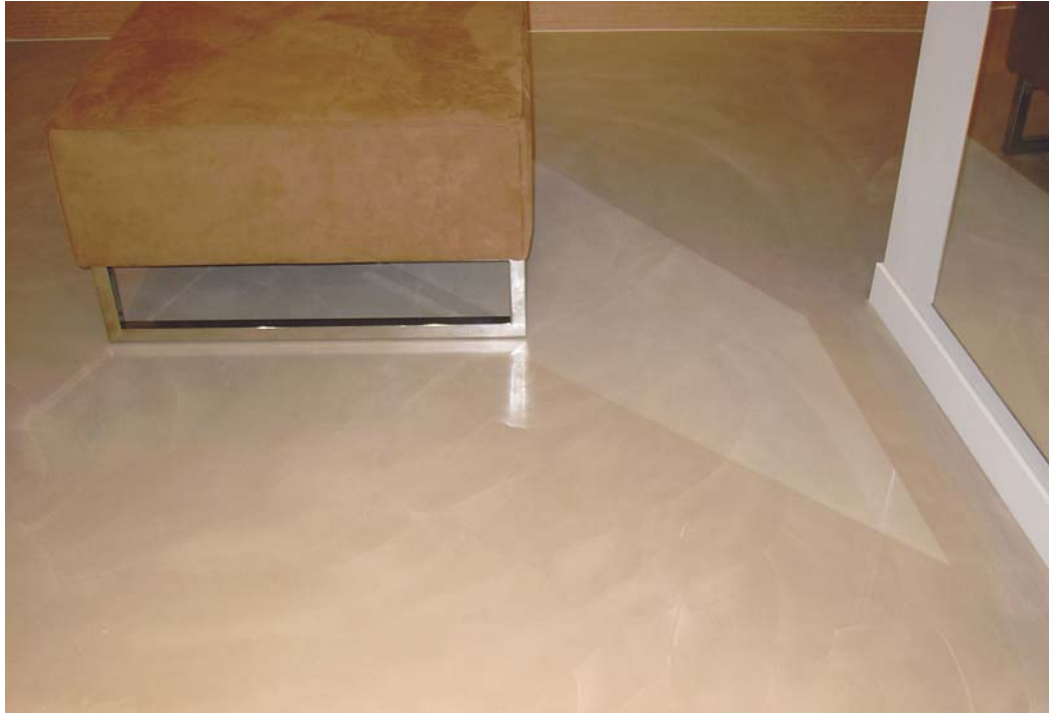


*Floor made using Mapefloor Decor 700*



*Floor made using Mapefloor Decor 700*

# Mapefloor Decor 700



Floor made using Mapefloor Decor 700



Floor made using  
Mapefloor Decor 700



Floor made using  
Mapefloor Decor 700

