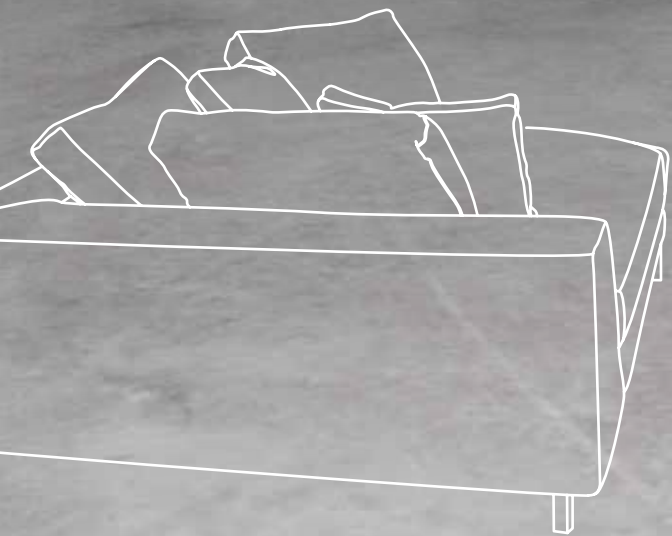


INTERIOR FOR LIVING



by
ULTRATOP[®]
LOFT





GYVENIMUI, PRIĖMIMUI IR DARBUI. PRESTIŽINĖJE APLINKOJE. **TINKAMOS ATMOSFEROS** SUKŪRIMAS YRA ESTETINIŲ IR KOMPOZICINIŲ PASIRINKIMŲ REZULTATAS, PABRĖŽIANTIS **CHARAKTERĮ IR INDIVIDUALUMĄ**. DVI SAVYBĖS, KARTU VEIKIANČIOS VISIŠKOJE HARMONIJOJE. CEMENTINIAI PAVIRŠIAI REPREZENTUOJA **ORIGINALIĄ GALIMYBĘ** IEŠKOTI NEĮPRASTINIŲ SPRENDIMŲ. BŪTENT TAI SLYPI UŽ ATSIDAVIMO KUPINOS IR INOVATYVIOS „MAPEI“ IDĖJOS, KUR ATSPALVIAI, LINIJIŠKUMAS IR GALUTINIAI REZULTATAI TAMPA ESMINIU MODERNAUS INTERJERO DIZAINO ŠALTINIU. PAPILDOMAS PRANAŠUMAS: **MAKSIMALUS PATIKIMUMAS** VIEŠOJOJE APLINKOJE, NEPRIKLAUSOMAI NUO PĖSČIŲJŲ EISMO INTENSYVUMO. DĖL **PUIKIŲ EKSPLOATACINIŲ SAVYBIŲ**, TOKIŲ KAIP MECHANINIS ATSPARUMAS IR ATSPARUMAS NUSIDĖVĖJIMUI SUKURIAMOS VIENTISOS, BESIŪLĖS GRINDYS.

*LIVING, WELCOMING AND WORKING. IN PRESTIGIOUS ENVIRONMENTS. CREATING THE **RIGHT ATMOSPHERE** IS THE RESULT OF AESTHETIC AND COMPOSITIONAL CHOICES THAT HIGHLIGHT **ESSENTIALITY AND PERSONALITY**. TWO CHARACTERISTICS THAT CAN LIVE TOGETHER IN PERFECT HARMONY. **CEMENTITIOUS** SURFACES REPRESENT AN **ORIGINAL OPPORTUNITY** TO GO BEYOND ROUTINE CONVENTIONS. THIS IS WHAT LIES BEHIND MAPEI'S IDEA FOR A DEDICATED, INNOVATIVE PROPOSAL, IN WHICH SHADES, LINEARITY AND END RESULTS BECOME THE VITAL LYMPH OF CONTEMPORARY INTERIOR DESIGN. WITH AN ADDED ADVANTAGE: **MAXIMUM RELIABILITY**, WHATEVER THE LEVEL OF FOOT TRAFFIC, IN CIVIL SURROUNDINGS. THANKS TO ITS **HIGH PERFORMANCE** CHARACTERISTICS OF MECHANICAL AND ABRASION RESISTANCE IN CREATING CONTINUOUS, WITHOUT INTERRUPTION FLOORINGS.*

DAR BO ERD VES

LAISVĖS IDĖJOS TIKSLAS YRA APIMTI VISKĄ NUO GRINDŲ IKI SIENŲ, PALIEKANT PASTEBIMĄ MEDŽIAGOS ĮSPŪDĮ. MŪSŲ AKIRATIS, NUO DARBO ERDVIŲ IKI POILSIO ZONŲ, VIS PLEČIASI IR UŽKARIAUJA PLATESNIUS, HARMONINGESNIUS HORIZONTUS, KURIE, SUKURDAMI SAVO INDIVIDUALUMĄ, GARANTUOJA BENDRĄ KOMPOZICIJOS HARMONIJĄ. TĖSTINUMAS ATKURIAMAS UŽMEZGANT DIALOGĄ TARP INTERJERO IR EKSTERJERO.

THE CONCEPT OF LIBERTY AIMS FOR ABSOLUTE INVOLVEMENT BETWEEN FLOORS AND WALLS WHICH COME TO LIFE WITH A MARKED MATERIC IMPACT. FROM WORK SPACES TO RELAXATION AREAS, OUR VIEW CONQUERS WIDER, MORE HARMONIOUS HORIZONS WHICH, WHILE CREATING THEIR OWN PERSONALITY, SAFEGUARD THEIR OVERALL COMPOSITIONAL HARMONY. CONTINUITY WHICH IS THEN RENEWED THROUGH A DIALOGUE BETWEEN INTERIORS AND EXTERIORS.

WO RK SPA CES



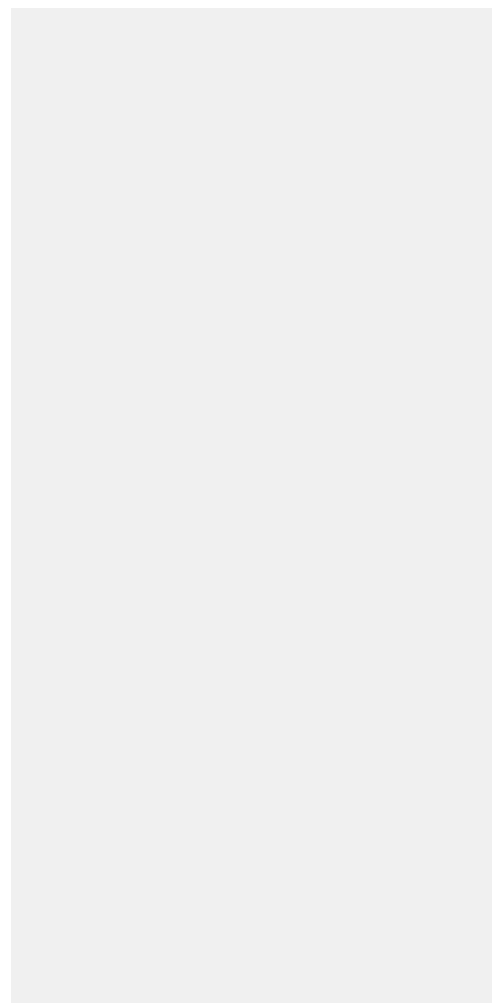


SALONAI

SHOWROOMS

Ar jie būtų skirti aukštosios mados, sportinių automobilių parodoms, ar retų, brangių vynų pristatymams, salonus vienijanti savybė yra atmosfera, kurią architektūra geba sukurti. Grindys ir sienos estetiškai papildo viena kitą, įtraukiant ir marketingo funkcijas bei apšvietimo išdėstymą, taip sukuriant harmoningą dialogą."

Whether they be they for displaying haute couture, sports cars or rare, precious wines, their unifying feature is the atmosphere that architecture is capable of creating. The aesthetic counterpoint between floors and walls also involves merchandising features and lighting displays, in a harmonious dialogue.





VIEŠBUČIAI IR RESTORANAI

Skonio pasaulis visada suteikia ypatingą erdvę architektūrinei kūrybai, o susitikimų ir susirinkimų vietos gali teikti vizualinį malonumą tiems, kurie turi subtilų skonį. Kiekviena individuali aplinka vakarienės stalui suteikia išraiškingumo gausą, gulančią ant paviršių, kur tonai, tekstūros ir spalvos kartu išreiškia žavesį, charakterį ir išskirtinumą.



HOTELS & RESTAURANTS

The finer things in life increasingly provide privileged spaces for architectural creativity and meeting and gathering places can now add visual pleasure to those of the palate. Each individual surrounding offers an expressive force to the dining table, resting on surfaces where tones, textures and colours combine to charm, define and distinguish.





SPA CENTRAI

NAUJOS GEROS SAVIJAUTOS ŠVENTOVĖS, KURIOSE POŽIŪRIS IR EMOCINIS ĮSITRAUKIMAS TAMPA ESMINE PASIŪLYMO DALIMI. PAPILDOMAS KŪRYBIŠKUMO PANAUDOJIMAS: DIALOGAS SU VANDENIU. SENOVINĖ SPA CENTRŲ KULTŪRA DERA SU NEPAPRASTAI ORIGINALIU METODU. PAVIRŠIŲ HARMONIJA SKLINDA IŠ ŽAVESIO, YRA APČIUOPIAMA IR AKIVAIZDI.

NEW TEMPLES OF WELLBEING MAKE THE VIEW AND EMOTIONAL INVOLVEMENT AN ESSENTIAL PART OF WHAT IS ON OFFER. WITH AN ADDED CREATIVE EXERCISE: ITS DIALOGUE WITH THE WATER. THE ANTIQUE CULTURE OF SPA CENTRES COMBINES WITH HIGHLY ORIGINAL PATHS. THE HARMONY OF THE SURFACES IS AT THE ROOT OF THEIR CHARM, TACTILE AS WELL AS VISUAL.







Livelli differenti nella stessa cornice compositiva, con presenza di scale e strutture ascensionali, chiedono al progetto nuove armonie. Le scelte estetiche delle superfici orizzontali possono essere riprese anche in verticale e negli elementi d'arredo, per ottenere una sorprendente continuità espressiva.



GYVENAMOSIOS ERDVĖS SU BALDAIS

LIVING SPACES WITH FURNISHINGS



Different levels within the same compositional framework, with stairs and lift structures that require a new harmony within their design. The aesthetic choices for horizontal surfaces may also be incorporated vertically and in furnishings, to create surprisingly expressive continuity.

privalumai **advantages**

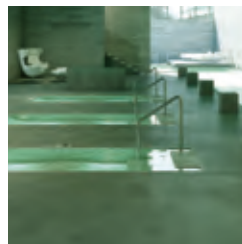
- Tinka visų tipų paviršiams: horizontaliems, vertikaliniams ir luboms
 - „Nuvolato“ efektas, vienspalvis arba tonas ant tono
 - Maišomas su plačia spalvų gama
 - Paprastas paruošimas ir naudojimas
 - Itin tvirtas ir atsparus nusidėvėjimui
 - Tinkamas gyvenamosioms ir komercinėms patalpoms, kur intensyvus pėsčiųjų eismas
 - Naudojamas taisyti esantiems paviršiams ir sukurti naujoms dangoms
 - Atsparus UV spinduliams
 - Malonus prisiliesti
 - Tekstūrinis/kūrybiškas apčiuopiamumo efektas
 - Lengvai valomas
 - Esminis, modernus, saikingas
 - Lengvai prižiūrimas
- *For all types of surface: horizontal, vertical and ceilings*
 - *Nuvolato effect, monochromatic or tone on tone*
 - *Mixable into an infinite array of colours*
 - *Simple preparation and application*
 - *High strength and resistance to abrasion*
 - *Suitable for residential surroundings and commercial areas with intense foot traffic*
 - *For repairing existing surfaces and creating new coatings*
 - *Resistant to UV rays*
 - *Pleasant to the touch*
 - *Textured/creative tactile effect*
 - *Easy to clean*
 - *Essential, modern, sober*
 - *Easy maintenance*

Pagrindinės panaudojimo sritys:

main areas of use



Gyvenamoji aplinka ir apstatymas
Residential settings



Sveikatingumo ir SPA kompleksai
Wellness and spa centres



Prekybos įstaigos ir parduotuvės
Commercial areas



Muziejai ir galerijos
Museums and art galleries



Restoranai ir viešbučiai
Restaurants and Hotel lobbies



Laiptai
Stairways

**SPALVŲ
PALETĖ**

***COLOUR
CHART***

ORANŽINĖ

balta bazė
white base



F

SAHARA OR

W



F

GOBI OR

W



F

MOAB OR

W



F

KAVIR OR

W



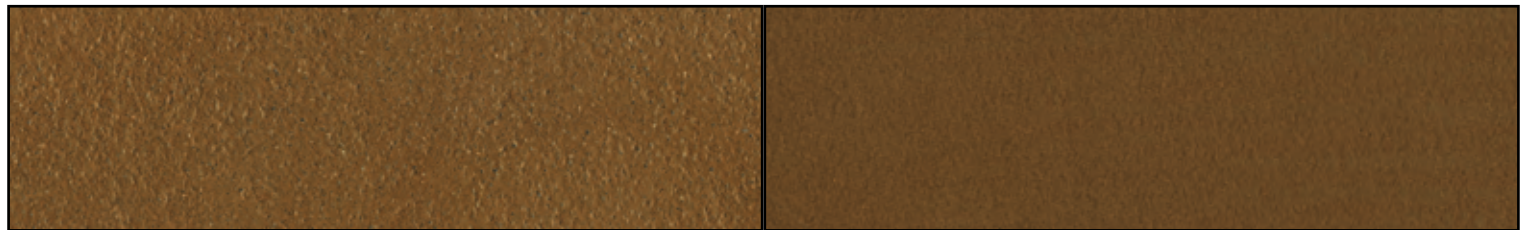
F

SONORA OR

W

ORANGE

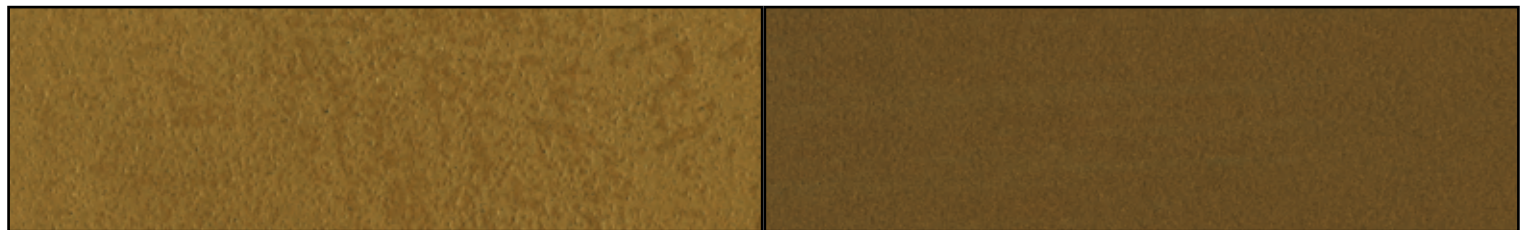
natūrali bazé *natural base*



F

SAHARA OR

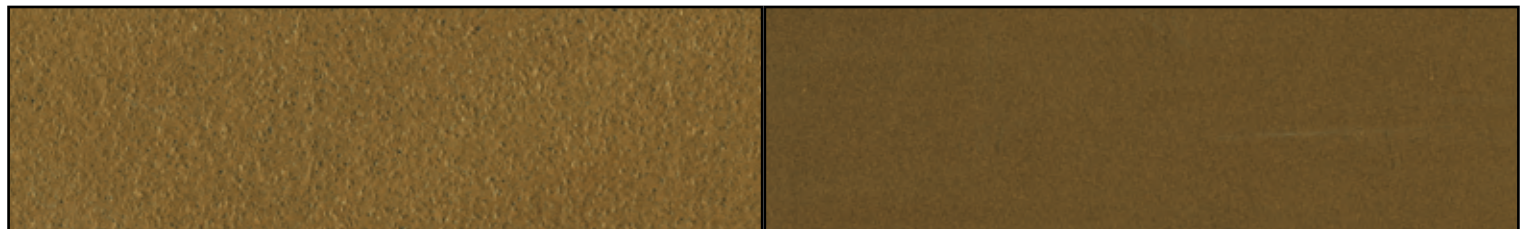
W



F

GOBI OR

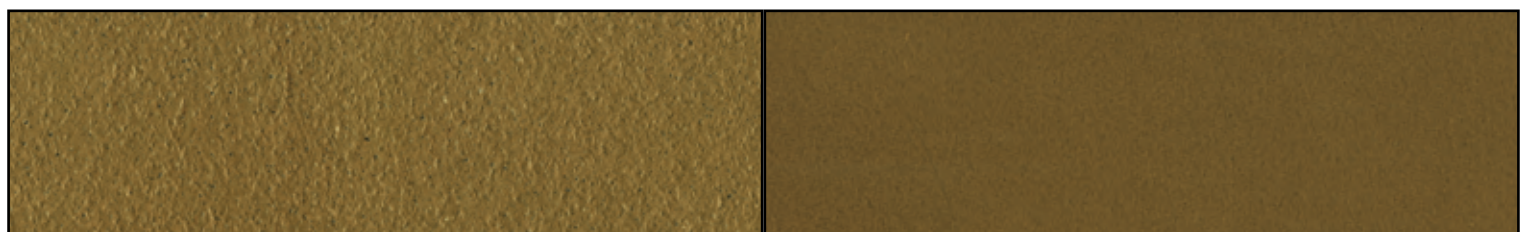
W



F

MOAB OR

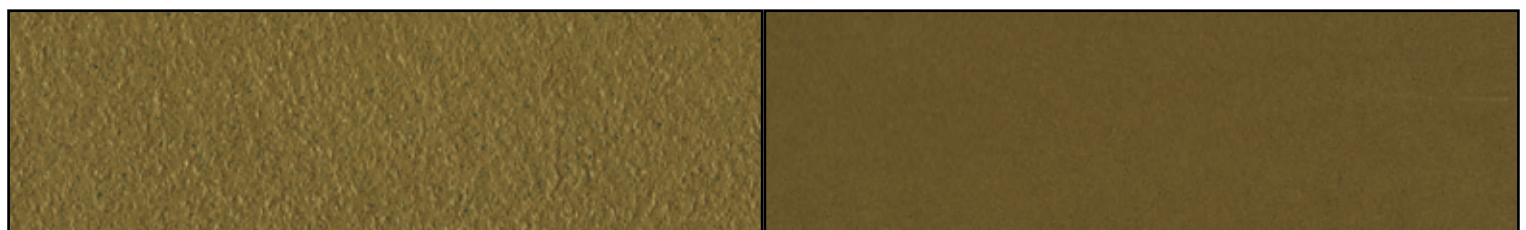
W



F

KAVIR OR

W



F

SONORA OR

W

MĒLYNA

balta bazė
white base



F

CUBA BL

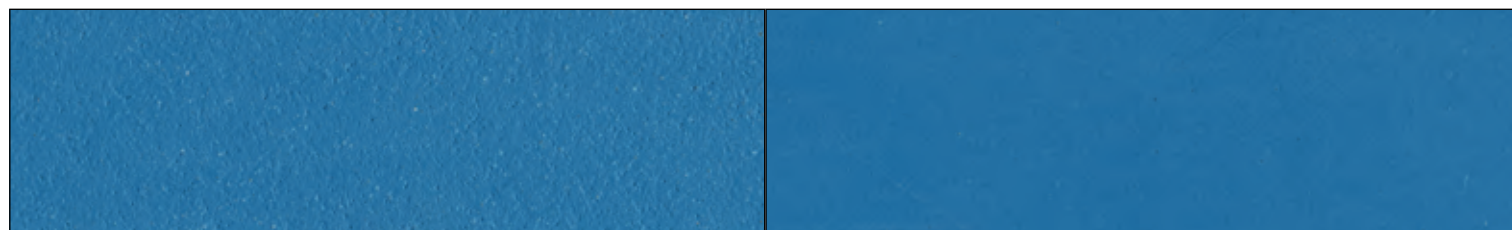
W



F

HAWAII BL

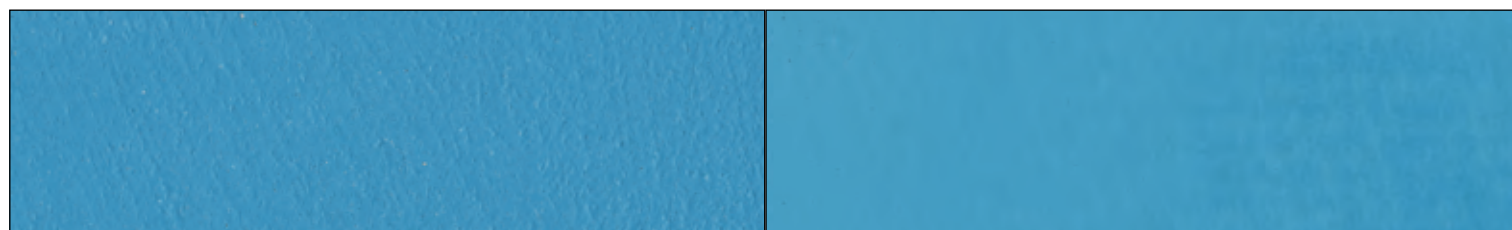
W



F

ZANTE BL

W



F

THAITI BL

W



F

FIJI BL

W

BLUE

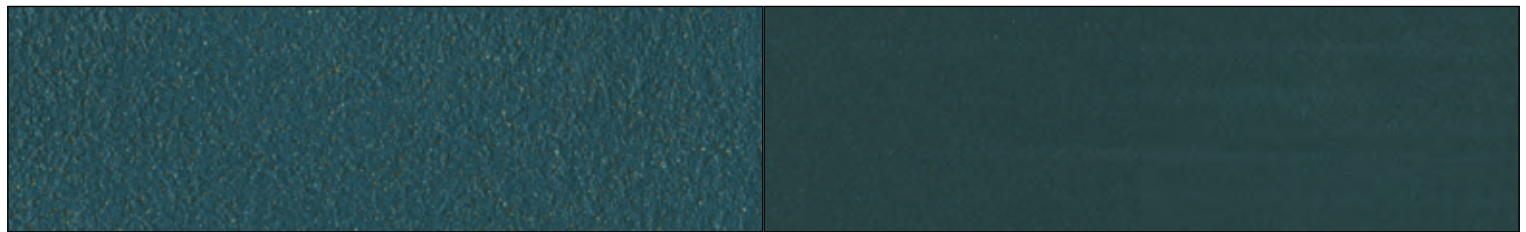
natūrali bazē *natural base*



F

CUBA BL

W



F

HAWAII BL

W



F

ZANTE BL

W



F

THAITI BL

W



F

FIJI BL

W

Due to the printing processes involved, the colours should be taken as merely indicative of the shades of the actual product.

SPALVOS **PASIRINKIMAS**

KOBALTO MĖLYNA

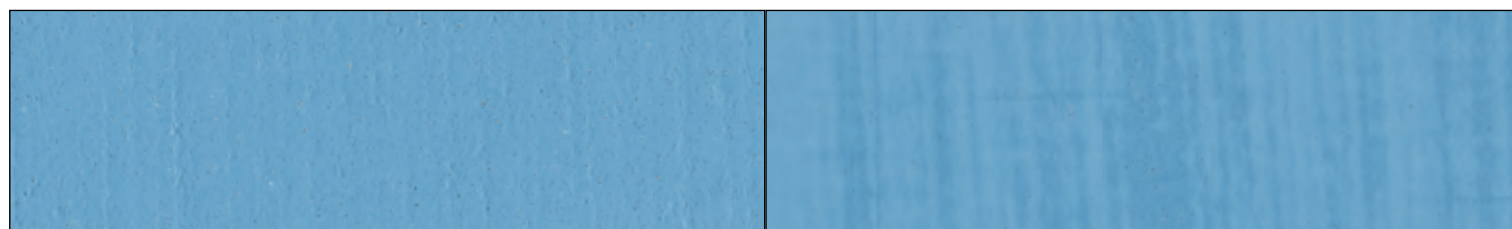
balta bazė
white base



F

VOLGA CO

W



F

DANUBIO CO

W



F

SENNA CO

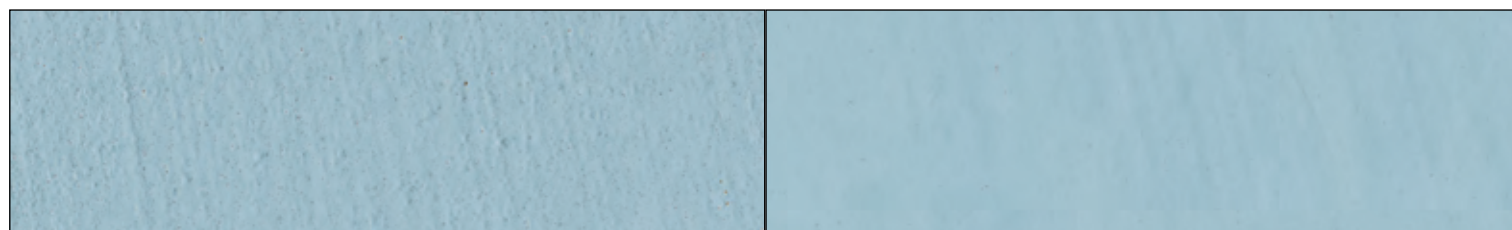
W



F

RENO CO

W



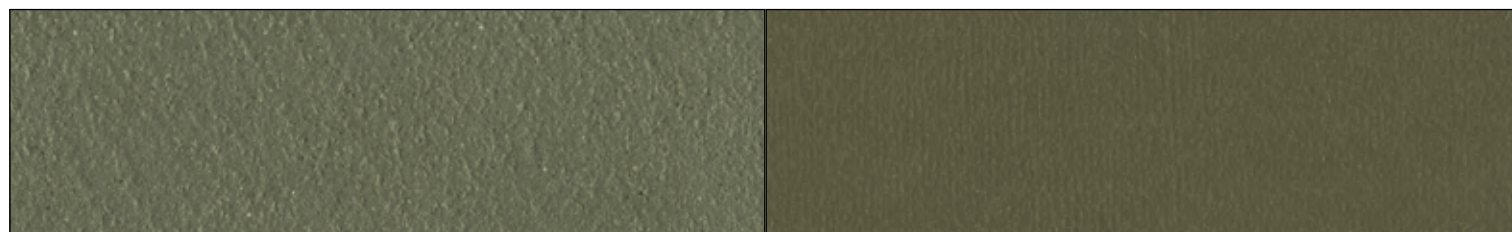
F

MANHATTAN CO

W

COBALT BLUE

natūrali bazē
natural base



F

VOLGA CO

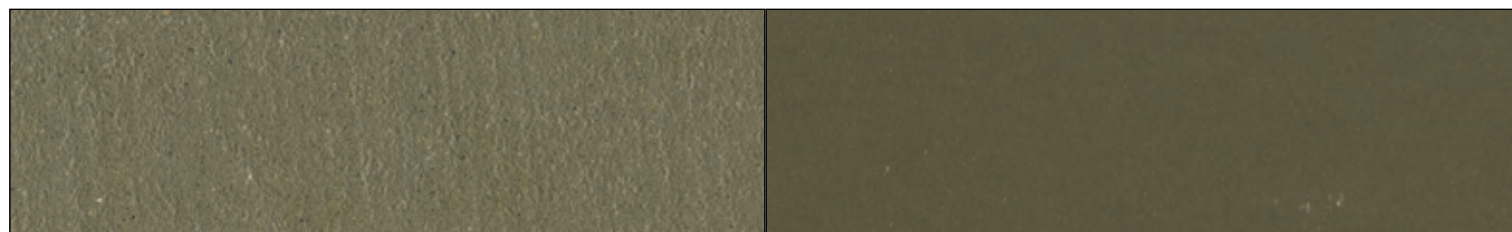
W



F

DANUBIO CO

W



F

SENNА CO

W



F

RENO CO

W

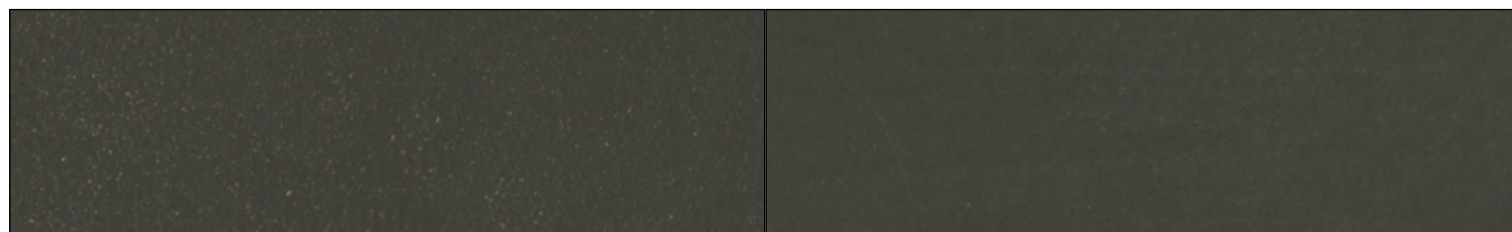


F

MANHATTAN CO

W

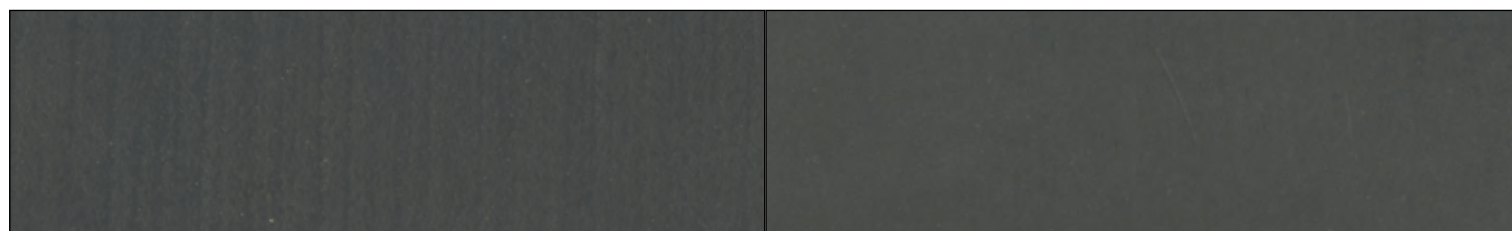
balta bazė
white base



F

LONDON GR

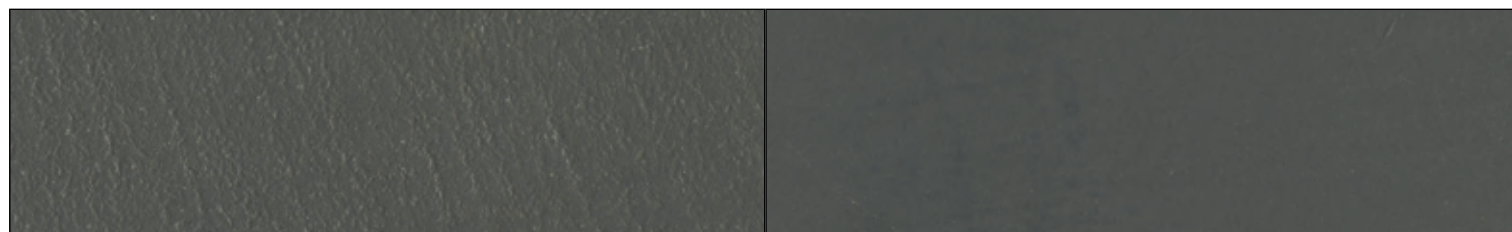
W



F

MOSCOW GR

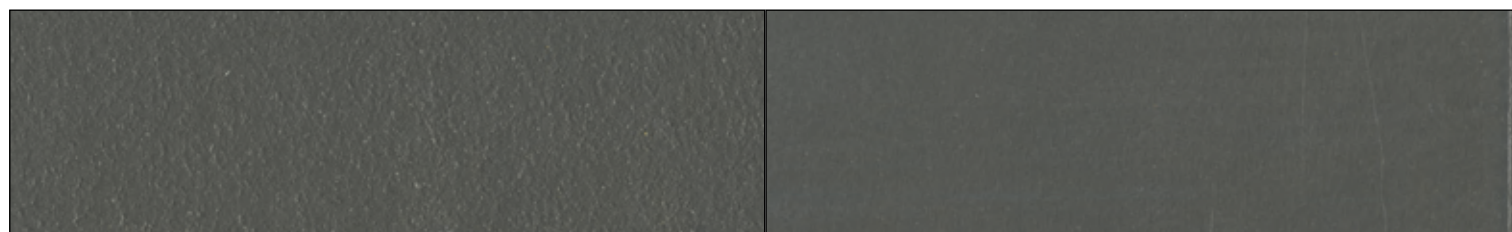
W



F

ZURICH GR

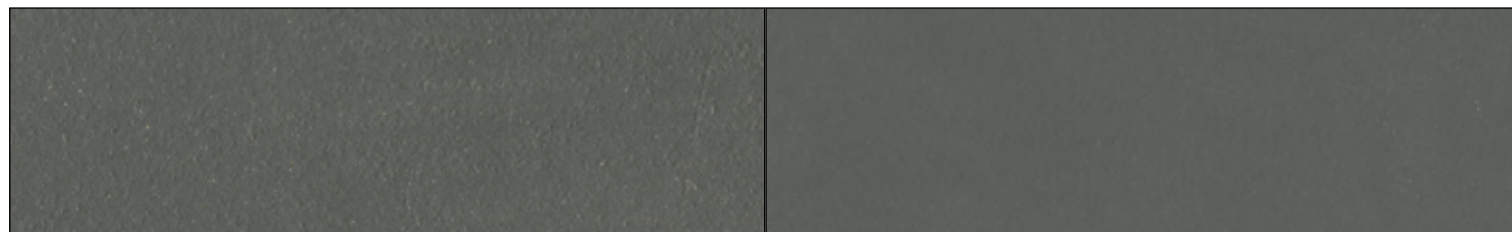
W



F

NEW YORK GR

W



F

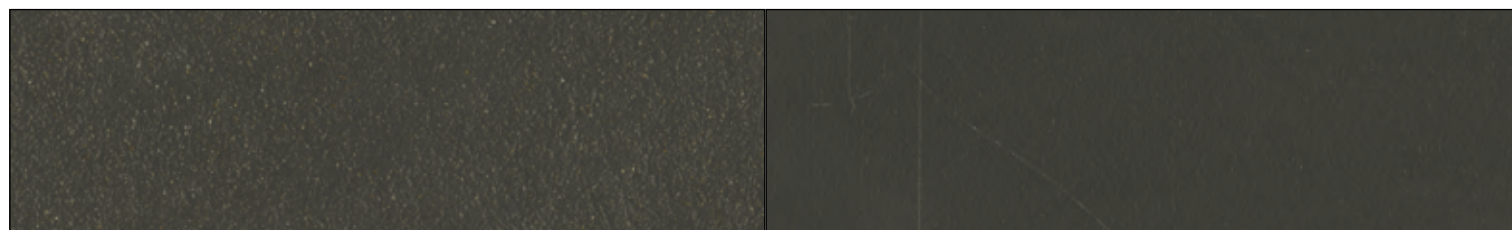
BERLIN GR

W

GREY

natūrali bazé

natural base



F

LONDON GR

W



F

MOSCOW GR

W



F

ZURICH GR

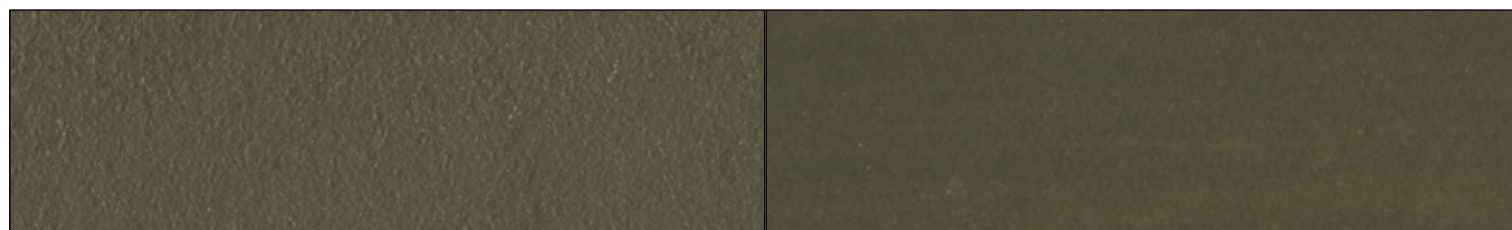
W



F

NEW YORK GR

W

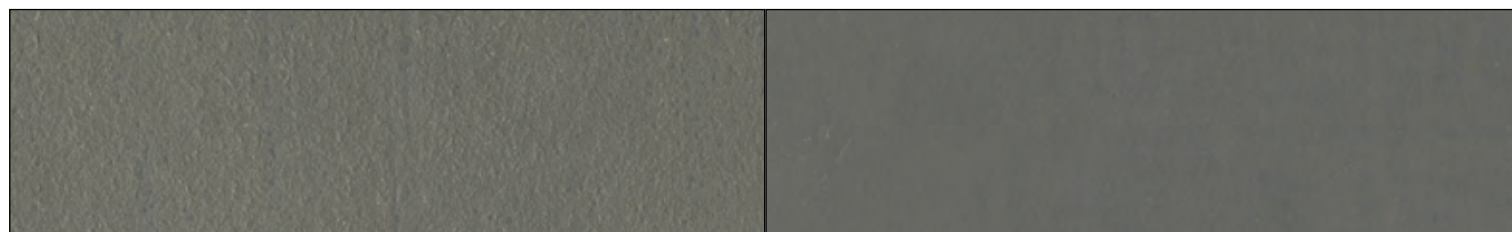


F

BERLIN GR

W

balta bazė
white base



F

BOSTON GR

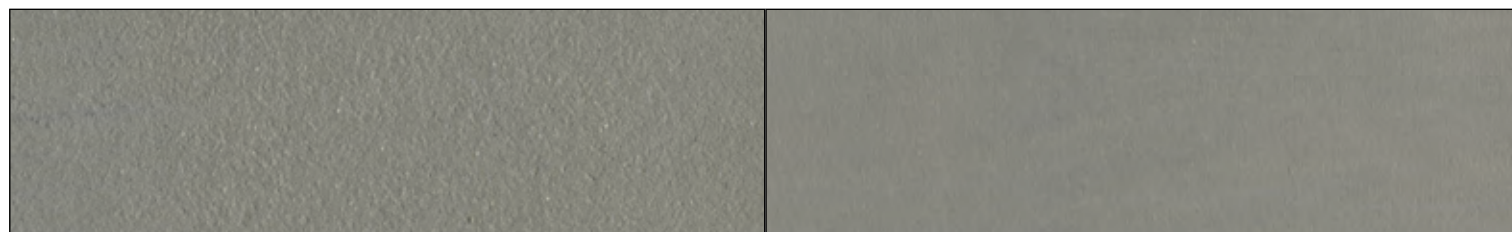
W



F

PARIS GR

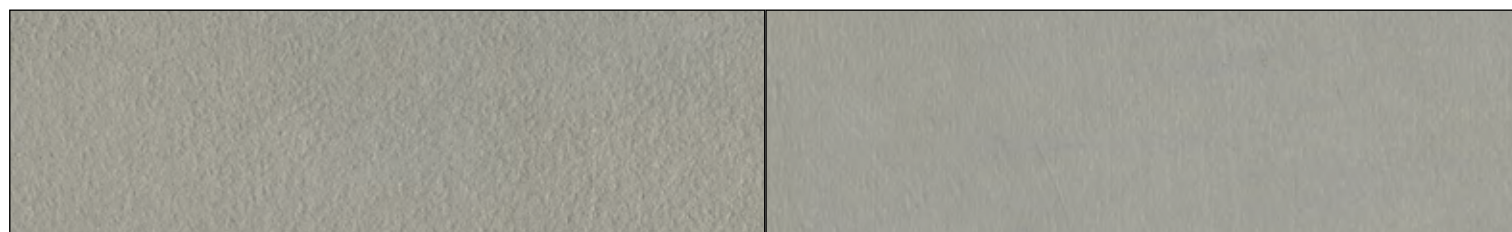
W



F

VENEZIA GR

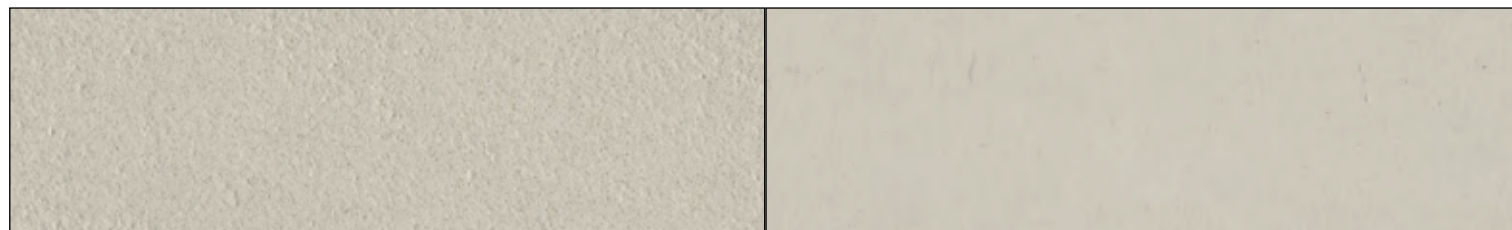
W



F

SEOUL GR

W



F

MILANO GR

W

GREY

natūrali bazē

natural base



F

BOSTON GR

W



F

PARIS GR

W



F

VENEZIA GR

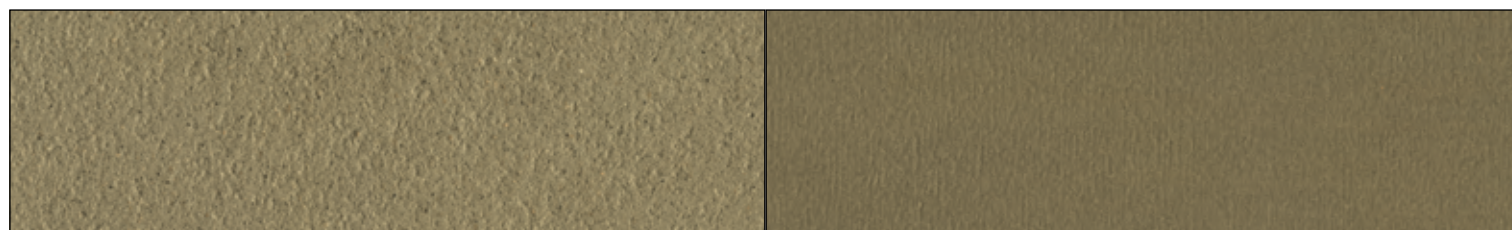
W



F

SEOUL GR

W



F

MILANO GR

W

RUDA

balta bazė
white base



F

CHOCOLATE BR

W



F

WESTERN BR

W



F

CANYON BR

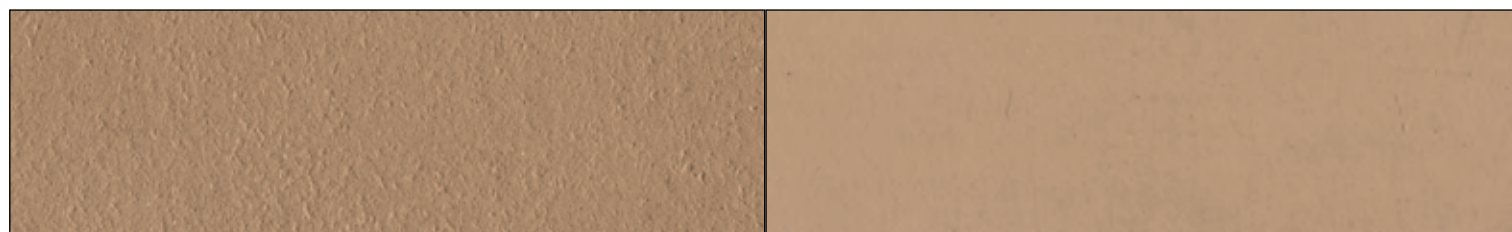
W



F

COCOA BR

W



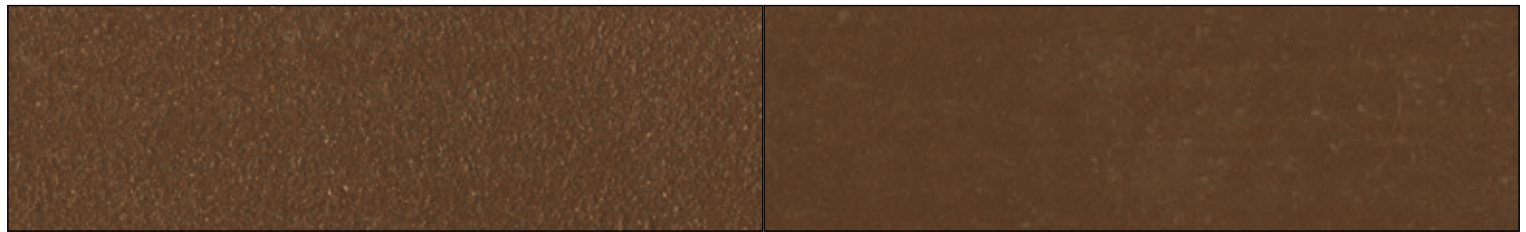
F

SAND BR

W

BROWN

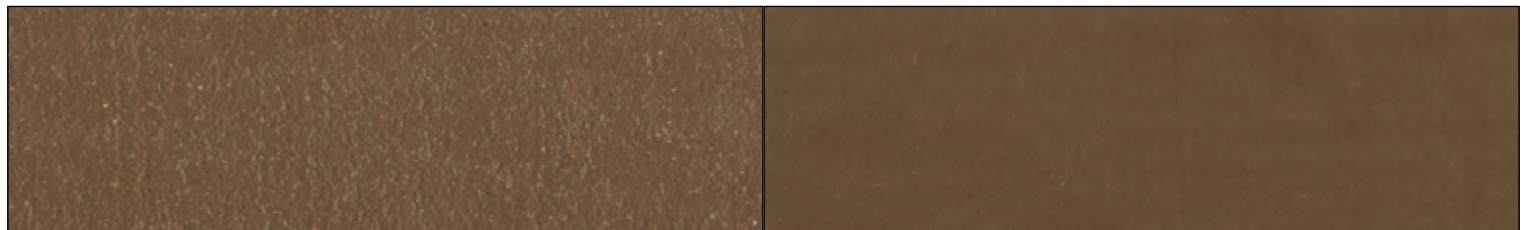
naturali bazé *natural base*



F

CHOCOLATE BR

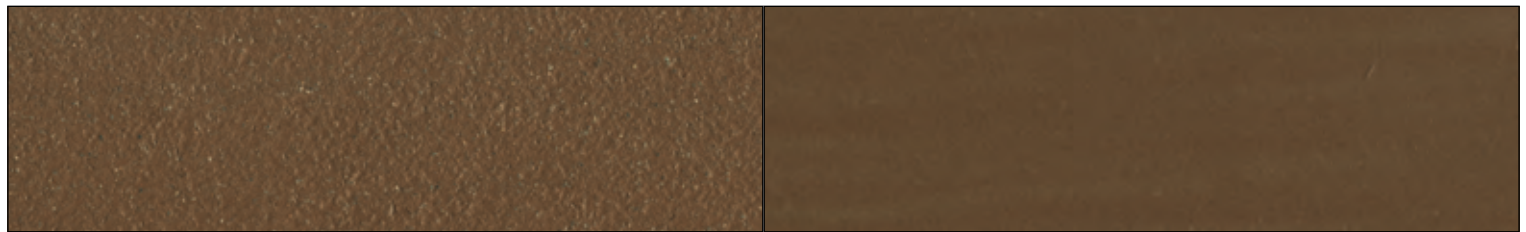
W



F

WESTERN BR

W



F

CANYON BR

W



F

COCOA BR

W



F

SAND BR

W

TAMSIAI RUDA

balta bazė
white base



F

MOKA DB

W



F

TOBACCO DB

W



F

COFFEE DB

W



F

PEPPER DB

W



F

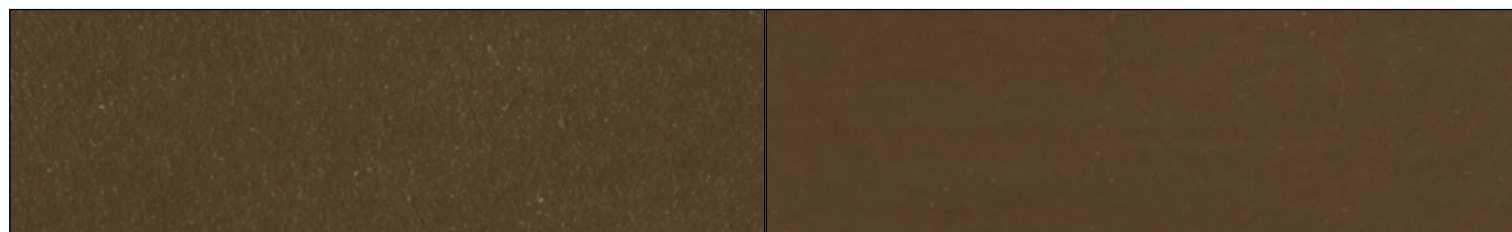
KOLA DB

W

DARK BROWN

naturali bazé

natural base



F

MOKA DB

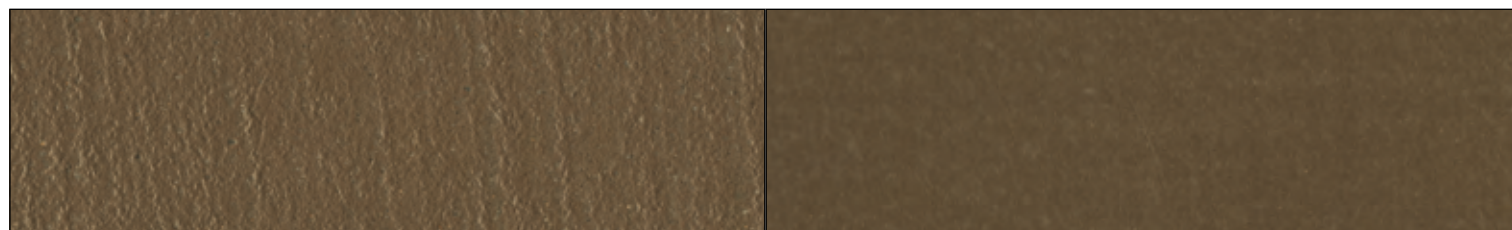
W



F

TOBACCO DB

W



F

COFFEE DB

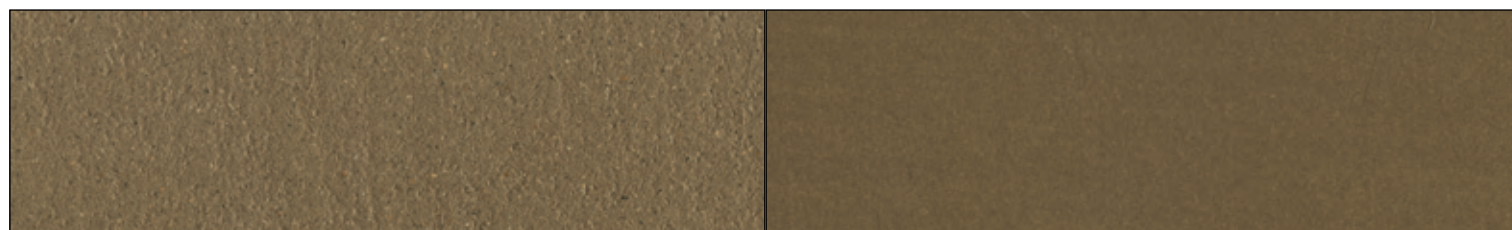
W



F

PEPPER DB

W



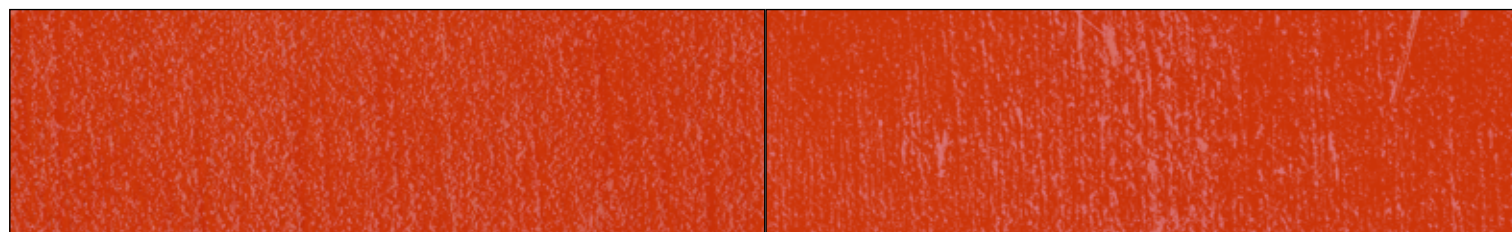
F

KOLA DB

W

RAUDONA

balta bazė
white base



F

FUEGO RE

W



F

ETNA RE

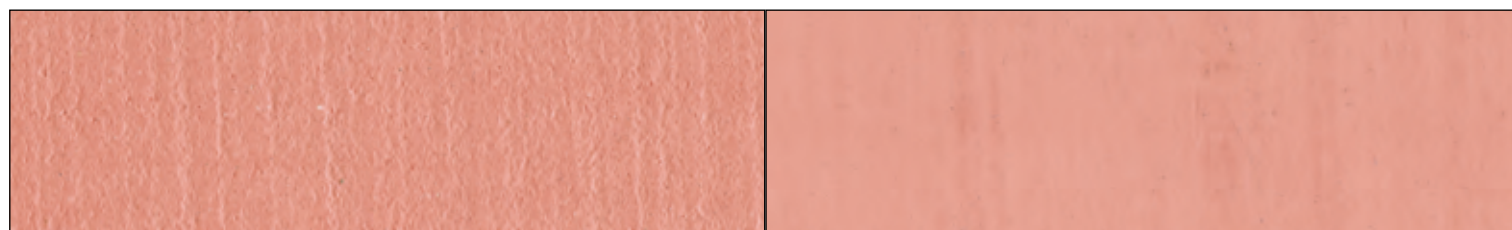
W



F

JAVA RE

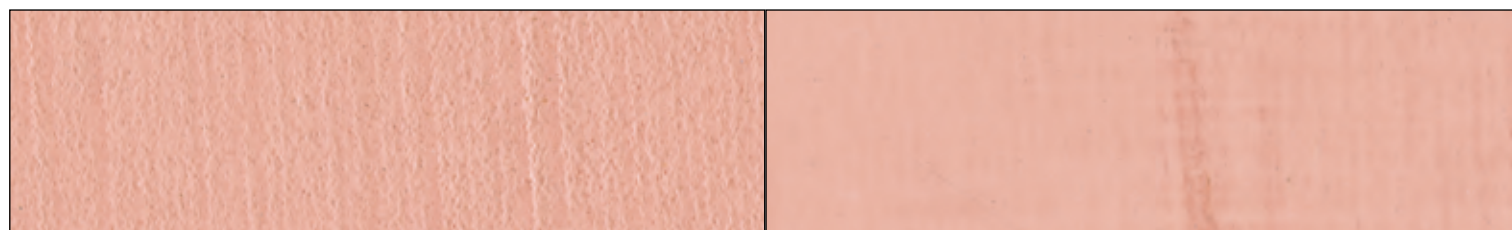
W



F

VESUVIO RE

W



F

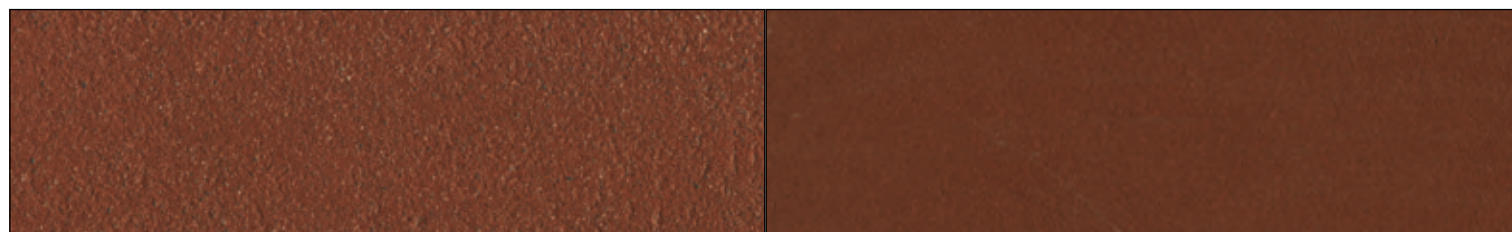
TENERIFE RE

W

RED

natūrali bazé

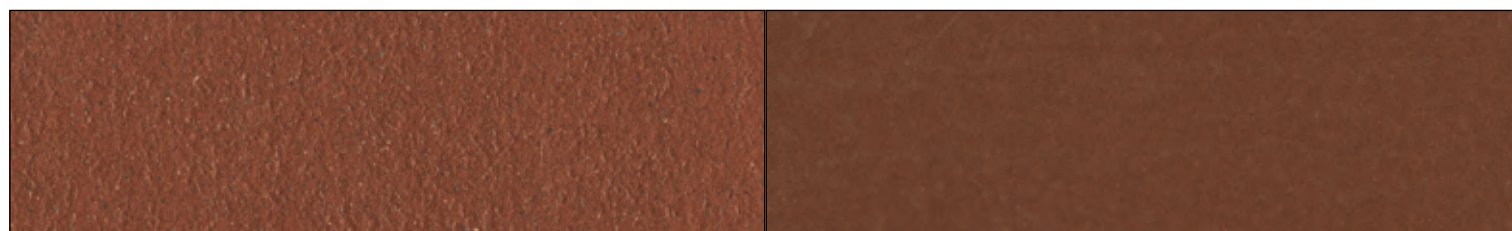
natural base



F

FUEGO RE

W



F

ETNA RE

W



F

JAVA RE

W



F

VESUVIO RE

W

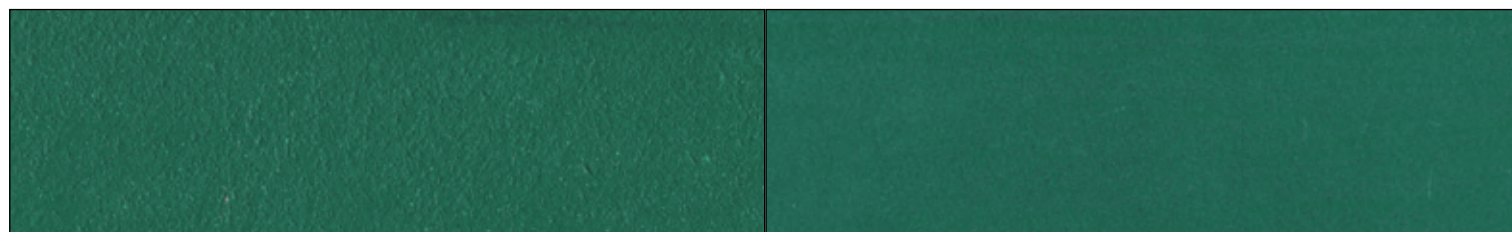


F

TENERIFE RE

W

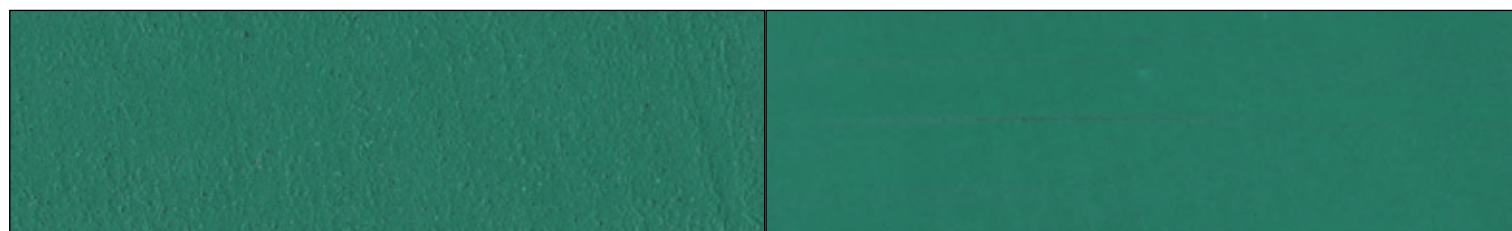
balta bazė
white base



F

BLACK FOREST GN

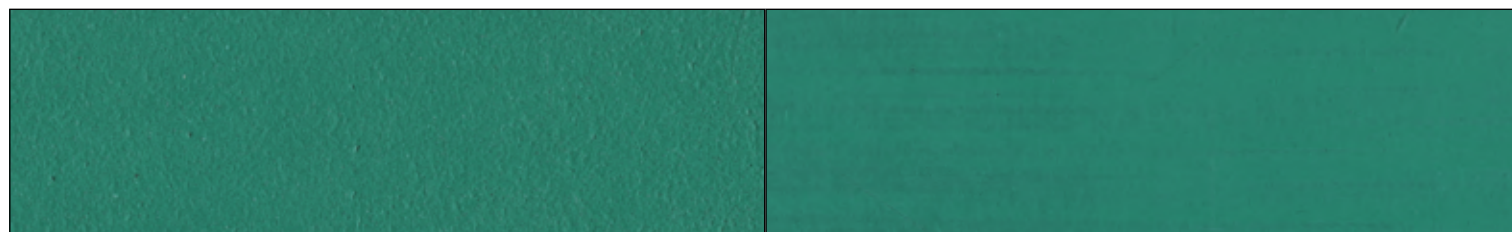
W



F

GREEN MOUNTAIN GN

W



F

BORNEO GN

W



F

SEQUOIA GN

W



F

BAMBOO GN

W

GREEN

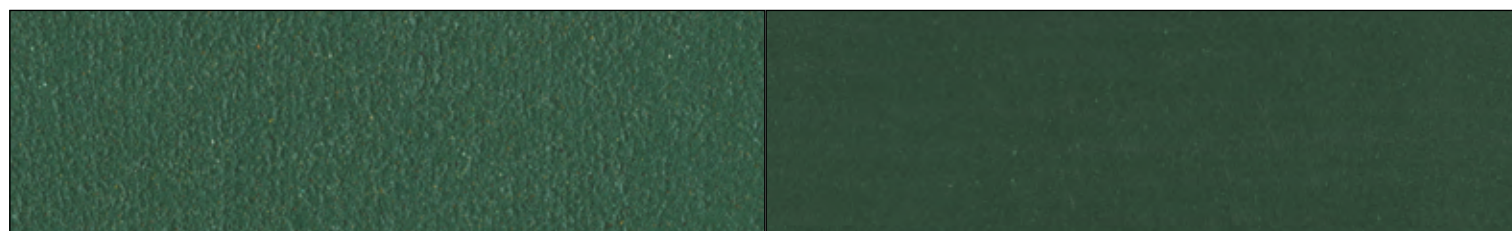
natūrali bazē *natural base*



F

BLACK FOREST GN

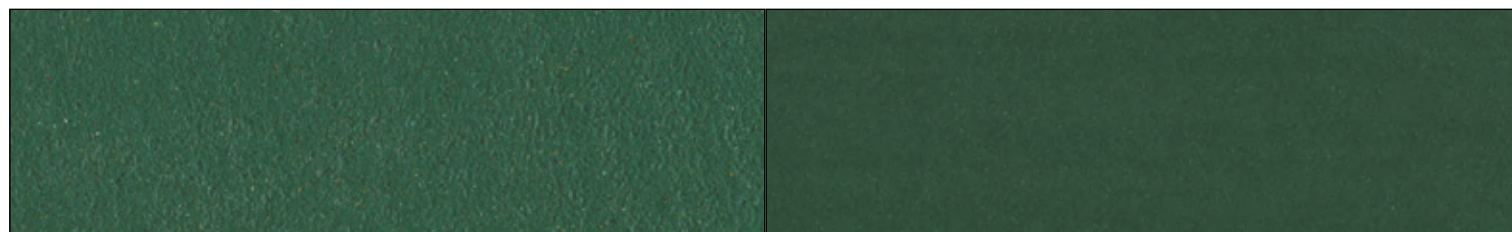
W



F

GREEN MOUNTAIN GN

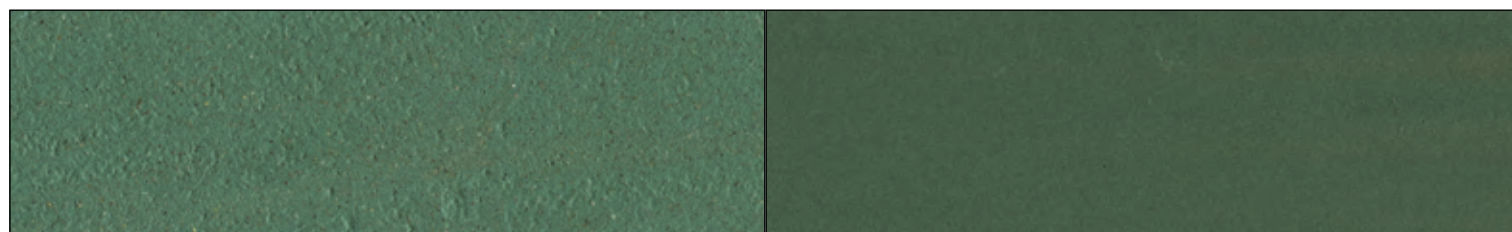
W



F

BORNEO GN

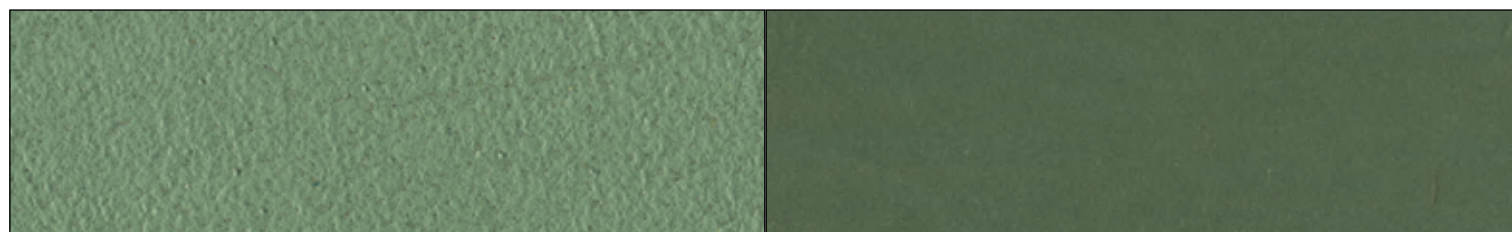
W



F

SEQUOIA GN

W



F

BAMBOO GN

W

SPALVOS **PASIRINKIMAS**

ŠVIESIAI GELTONA

balta bazė
white base



F

MIMOSA YL

W



F

SUNSHINE YL

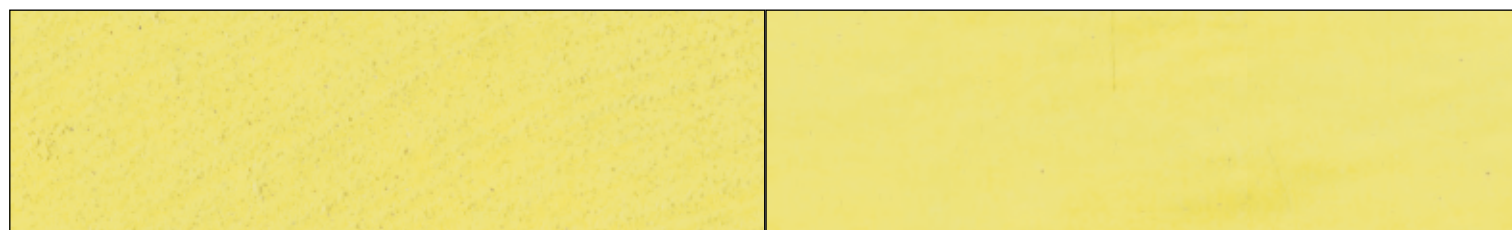
W



F

SUMMER YL

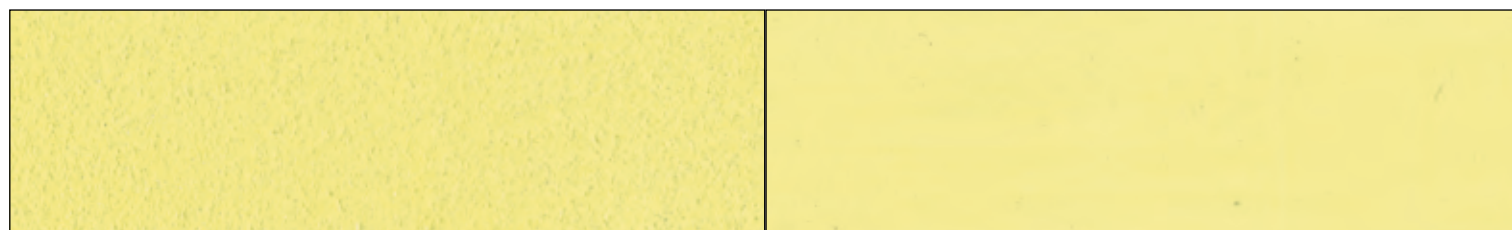
W



F

VANILLA YL

W



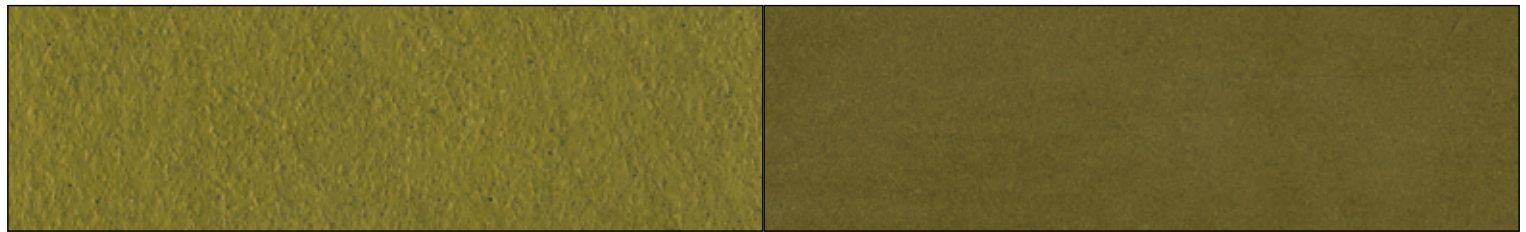
F

MAIZE YL

W

BRIGHT YELLOW

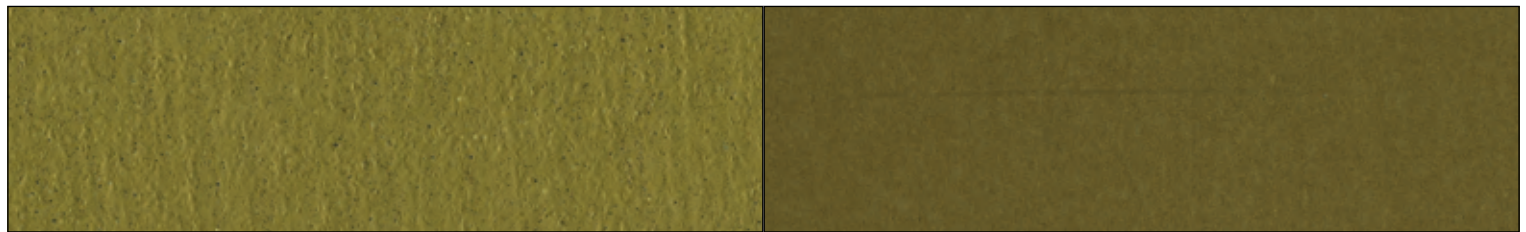
natūrali bazé *natural base*



F

MIMOSA YL

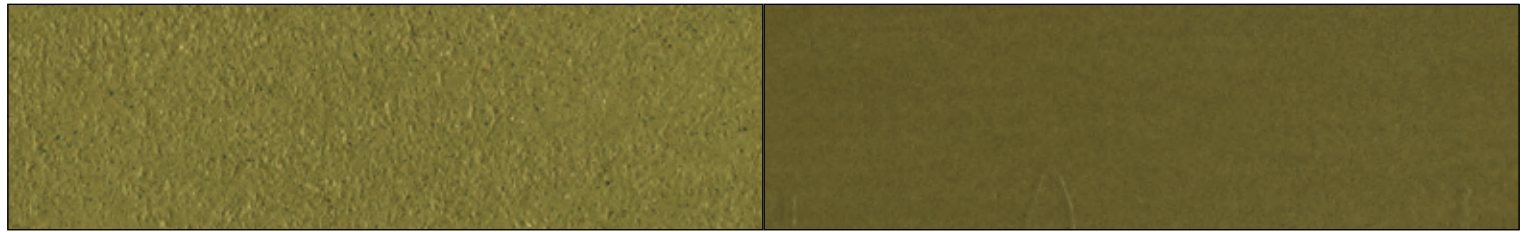
W



F

SUNSHINE YL

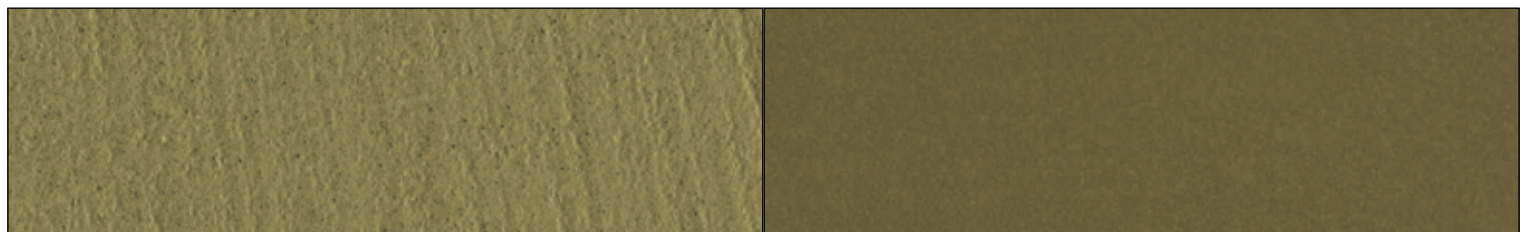
W



F

SUMMER YL

W



F

VANILLA YL

W



F

MAIZE YL

W

OCHRA GELTONA

balta bazė
white base



F

SAFRAN YO

W



F

SUNFLOWER YO

W



F

AMBER YO

W



F

MANGO YO

W



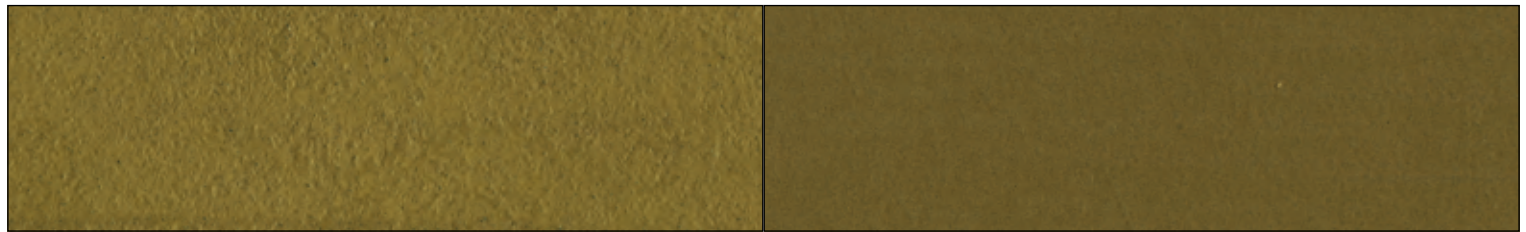
F

PYRAMID YO

W

OCHRE YELLOW

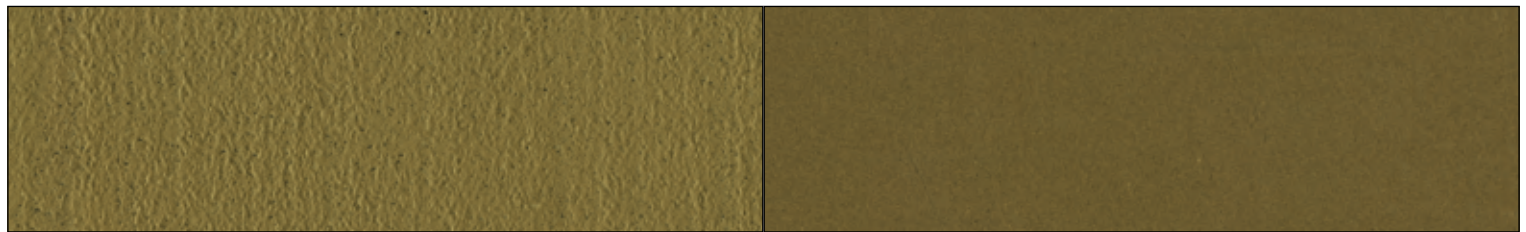
natūrali bazé
natural base



F

SAFRAN YO

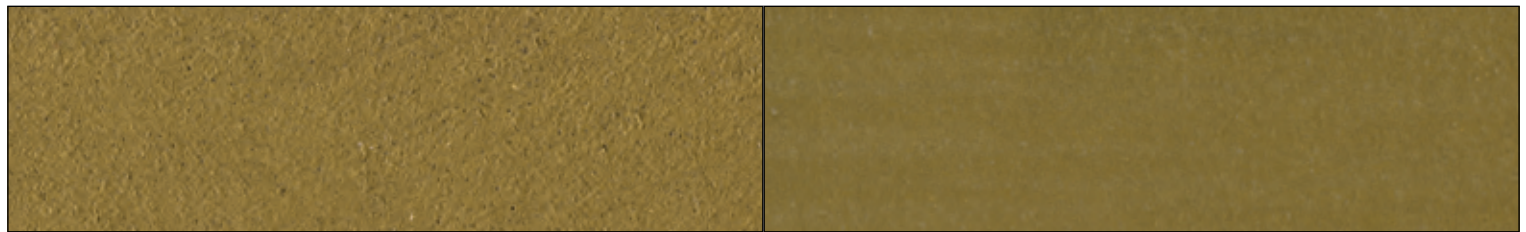
W



F

SUNFLOWER YO

W



F

AMBER YO

W



F

MANGO YO

W



F

PYRAMID YO

W



PANAUDOJIMAS

REFERENCES



A



B







B

A B

IDW ITALIA ekspoziciju salē
(Chiavazza - Biella - Italia)

IDW ITALIA Showroom
(Chiavazza - Biella - Italy)



A

Simonetti atstovybė (Civitanova Marche – Macerata – Italia)
Simonetti dealer (Civitanova Marche - Macerata - Italy)

B

Vallati atstovybė (Castel Del Piano – Grosseto – Italia)
Vallati dealer (Castel Del Piano - Grosseto - Italy)





A B

Specifikacijų Centras “Mapei World” (Londonas - JK)

“Mapei World” Specification Centre (London - UK)





A



B



C

A B C

Petrof galerija
(Hradec Kralove – Āekijos republika)
Petrof Gallery
(Hradec Kralove - Czech Republic)





A



B



C

A B C

**Saccaro ekspozicijų salė
(Porto Alegre - Brazilija)**
Saccaro Showroom
(Porto Alegre - Brasil)

D E

**Wisma Lafarge biuras
(Petaling Jaya - Malaizija)**
Wisma Lafarge offices
(Petaling Jaya - Malaysia)





A



B



C

A B C

**Zhongnan Group biuras Šanchajuje
(Kinija)**

Zhongnan Group Office @ Shanghai
(Shanghai - China)







B

A B

Thrudesign Wood dirbtuvės (Pekinas - Kinija)
Thrudesign Wood DIY Workshop (Beijing - China)





B



C

A B C

**Leonardo Da Vinci mokslo ir technologijų
muziejus (Milanas - Italija)**
“Leonardo Da Vinci” Museum of Science and
Technology (Milan - Italy)



A

**Šiuolaikinio meno galerija
(San Marinas)**

Modern and Contemporary Art Gallery
(Republic of San Marino)

B C

**Sciaccia karnavalų muziejus
(Sciaccia - Agrigento - Italija)**

Sciaccia Carnival Museum
(Sciaccia - Agrigento - Italy)



B



C





A B

“A Mano” restoranas (Atėnai- Graikija)
“A Mano” restaurant (Athens - Greece)





A B

**Austrių restoranas
(Termoli - Campobasso - Italija)**
Oyster Fish Restaurant
(Termoli - Campobasso - Italy)



A



B

A B C

Zaryadye parkas (Maskva - Rusija)
Park Zaryadye (Moscow - Russia)







A B C

**Santa Barbara Eco Beach kurortas
(Ponta Delgada - Portugalija)**

Santa Barbara Eco Beach Resort
(Ponta Delgada - Portugal)



A



B



C



D



A B C D

**Santa Barbara Eco Beach kurortas
(Ponta Delgada - Portugalija)**

Santa Barbara Eco Beach Resort
(Ponta Delgada - Portugal)

A B C D

**“Villa Natia” viešbutis ir restoranas
(Mottola - Taranto - Italija)**
“Villa Natia” Restaurant Hotel
(Mottola - Taranto - Italy)









B



C

A B C

**“Villa Natia” viešbutis ir restoranas
(Mottola - Taranto - Italija)**

“Villa Natia” Restaurant Hotel
(Mottola - Taranto - Italy)





A B C

Karma Line Rezidencija (Maskva - Rusija)
Karma Line Residences (Moscow - Russia)



A

Balti liukso numeriai ir vilos (Lagoa - Portugalia)
White Exclusive Suites & Villas (Lagoa - Portugal)

